

**PERSON COUNTY
RECREATION
ARTS
&
PARKS
DEPARTMENT**



**2007/2008
FALL/WINTER
ACTIVITY**

Message From The Director

Greetings:

The Person County Recreation, Arts, and Parks Department provides a variety of programs and services for all ages and populations. Whether you are a life-long resident or new to our community, we hope that you will take advantage of the many resources available to you and your family.

We have a dedicated team of professionals that are extremely proud of the quality of life we offer our community.

The 2007/2008 Fall-Winter Brochure will give you an opportunity to explore the many resources and programs available to Person County.

We remain dedicated to serving our citizens and visitors. We encourage all citizens and visitors to take advantage of our parks, lakes, arts, athletics, wellness, recreation programs and special events.

Please feel free to contact any member of our staff with comments and suggestions.

Mitchell A. Pergerson
Director

Welcome to the Person County Recreation, Arts & Parks 2007/2008 Fall/Winter Activity Guide. This brochure is designed with you in mind and will provide all the information you need to fill your leisure hours with enjoyment, relaxation, fitness and learning. We are a committed team of recreation professionals who are dedicated to providing life-enhancing leisure opportunities to the citizens of Person County. We are here for YOU! If you would like to talk to us at any time, just give us a call at 597-1755.

TABLE OF CONTENTS

- Departmental Policies 4
- Department Staff 5
- Recreation Advisory Board, Person County Board of Commissioners 6
- Mission Statement 6
- Recreation Programs 7
- Special Events 10
- Mayo Park Programs 12
- Cultural Arts Programs 15
- Kirby Theatre Programs 16
- Kirby Gallery Showings 18
- Youth Athletic Programs 19
- Adult Athletic Programs 21
- Tennis Programs 22
- Special Olympics Programs 23
- Facilities, Fields & Gyms 24
- Contact Us 28

Policies of The Person County

Recreation, Arts & Parks Department

PROGRAM EXCELLENCE

The Person County Recreation, Arts and Parks Department works with a variety of individuals and agencies to ensure that recreation programs and services are available and accessible to all persons. Please contact us to let us know how we can make your recreational experience a safe, successful, and enjoyable one.

FEES & CHARGES

The policy of the department is that those who participate should help defray the overall costs of the activity. Fees and charges are therefore assessed according to the needs of the programs such as extra leadership, skilled instructors, and special equipment. Scholarships are available for the financially challenged.

NON-RESIDENT POLICY

All participants who are not Person County residents will be charged \$30.00 (adult), \$20.00 (youth), age 18 and under), a non-resident fee per sport or activity or a fee 50% greater than resident fee (whichever is less.

If the participant owns and pays real estate taxes in Person County, they would be non-resident fee exempt.

NO SMOKING/ALCOHOL USE POLICY

All Board of Education owned properties are both tobacco and alcohol free. The use of tobacco products at all indoor premises operated by Person County is prohibited. The use of alcohol on all county owned property is prohibited.

NON-DISCRIMINATION POLICY

The Person County Recreation, Arts & Parks Department does not discriminate based on religion, sex, race, color, national origin, political affiliation, qualified disability, marital status, or age.

PHOTOGRAPHY

The Recreation, Arts & Parks staff may take pictures of participants in our programs. Please be aware that these pictures are for use in future brochures, on the department's website, or other informational uses. By registering for any of the Recreation Department's programs, you allow publication of photos taken at any program, event, or facility of the Recreation Department, unless you have filed a written request not to be included in published photos.

THE STAFF OF THE RECREATION, ARTS & PARKS DEPARTMENT

Mitchell A. Pergerson	Director	mitchp@personcounty.net
Jennifer J. Teasley	Administrative Support Assistant	jteasley@personcounty.net
Kay B. Rudd	Recreation Program Supervisor	kayrudd@personcounty.net
Jennifer L. Dunkley	Athletic Supervisor	jdunkley@personcounty.net
Courtney W. Vincoli	Athletic Assistant	cvincoli@personcounty.net
Sarah A. Farr	Athletic Office Assistant	sfarr@personcounty.net
John A. Hill	Mayo Park Supervisor	johnhill@personcounty.net
D. C. Horton	Mayo Park Ranger	dhorton@personcounty.net
G. Douglas Newell	Cultural Arts Supervisor	dnewell@personcounty.net
Marilyn Huyck-Kuehn	Kirby Gallery Assistant	mkuehn@personcounty.net
Vickie L. Holt	Maintenance/Facility Supervisor	vholt@personcounty.net
James "Reggie" Dunn	Facility Technician	

RECREATION ADVISORY BOARD

Arnold Ashley
Vice-Chairman
Reverend William Budzinski
Froncello Bumpass
Vickie Kirk
Chairperson
Donald Long
Johnny Lunsford
Board of Commissioners Representative

Person County Board of Commissioners

Larry H. Bowes

Jimmy B. Clayton

Vice-Chairman

Johnny Myrl Lunsford

Chairman

Kyle W. Puryear

Larry E. Yarborough, Jr.

Steve Carpenter, Person County Manager

Paul Bailey, Assistant County Manager

C. Ronald Aycock, Person County Attorney

Person County Recreation, Arts & Parks Department Mission Statement

The Person County Recreation, Arts, & Parks Department's mission is to promote and provide opportunities to enjoy meaningful leisure experiences with the provision of quality leadership, the development and maintenance of safe recreation facilities, the conservation and preservation of natural and open spaces, and creative programming in the areas of Arts, Athletics, Recreation Programs and the Environment that are essential to the well-being of all our citizens.

Recreation Programs

CHEERLEADING CLASSES

Girls between the ages of 5 and 15 will learn the basic moves, drills, cheers, and jumps in this class. This ongoing program will allow participants to advance from beginner level to more difficult activities. Participants will cheer at Recreation sponsored football and basketball games during their seasons. Classes are held in the Huck Sansbury Annex (old Social Services building) on Saturday mornings. New session will begin September 8. Age cutoff is October 16, 2007.

Reg. fee:	\$25.00/month/res	Time:	10:00 – 11:00 am
	\$37.50/month/non-res		
Reg. Deadline:	September 21		

POWER KATZ KARATE

Boys and girls between the ages of 5 and 15 may participate in this ongoing program that allows participants to advance from beginner (white belt) all the way to advanced (black belt). This program is designed to teach participants self-esteem and confidence. Classes are held in the cafeteria at the old Helena Elementary School every Monday evening. Classes are taught by Jason West, a certified black belt. New session will begin on September 10. Age cutoff is October 16, 2007.

Reg. Fee:	\$25.00/month/res	Time:	6:00 pm for beginners
	\$37.50/month/non-res		
Reg. Deadline:	October 1		

PILATES

Taught by Susan Rhodes, pilates is a relaxing, core strengthening exercise that is appropriate for ages 17 and up. This type of exercise, performed to soothing music, also helps to increase your flexibility. Session is 10 weeks consisting of 20 classes on Tuesday and Thursday evenings. Floor mats are provided and classes are held in the Huck Sansbury Annex (old Social Services building). New session begins October 9.

Reg. Fee:	\$35.00/res	\$52.50/non-res	Time	5:30 – 7:00 pm
Reg. deadline:	October 4			

GOLF CLINICS

Join us on the driving range at the Roxboro Country Club for three afternoons of learning and fun. Rocky Oliver, golf manager at the Country Club, will be providing the instruction, equipment, and facilities. These clinics are for beginners ages 6-9 and 10-13. The registration fee covers all three dates.

Dates: October 7 – 14 – 21
Time: 1:00 – 2:00 pm - ages 6 – 9 2:15 – 3:15 pm - ages 10-13
Reg. fee: \$20.00/res \$30.00/non-res
Reg. Deadline: October 4

CERAMICS WORKSHOP

To be held on Monday evenings from 6:00 – 8:00 pm in the “Backroom at the Gallery” on Main Street beginning September 17. There is a wide selection of projects for you to choose from, ranging from very small pieces to very large pieces. Instructor for the workshop will be Dee Kirk, who has worked with ceramics for the past 20 years. For more information contact the Recreation Department.

Special Events

HORSESHOE TOURNAMENT

To be held at Mayo Park in conjunction with the Fall Music Festival on Saturday, October 13 beginning at 10:00 am. Tournament is open to all men and women ages 16 and up. Tournament will follow NHPA rules. Men and women will compete separately.

Date: October 13 10:00 am
Reg. fee: \$5.00/res \$7.50/non-res
Reg. deadline: October 10

BOCCE TOURNAMENT

Come try you hand at a “new” old sport – bocce, also called Italian Lawn Bowling. This game is one that will sharpen your reflexes and judgment. An ancient game from Roman times that is enjoyed by young and old today.

Date: November 3 9:00 am
Reg. fee: \$5.00/res \$7.50/non-res

Reg. deadline: October 31

SINGLES TABLE TENNIS TOURNAMENT

To be held on November 17 at 10:00 am at the Olive Hill gym, this tournament is open to all ages and genders; and will be combined into one bracket.

Date:	November 17	10:00 am
Reg. fee:	\$7.00/res	\$10.50/non-res
Reg. deadline:	November 13	

ROOK TOURNAMENT

Date:	February 9, 2008	10:00 am
Reg. Fee:	\$8.00/team/res	\$12.00/team/non-res
Reg deadline:	February 6, 2008	

Special Events

31st ANNUAL EASTER EGG HUNT

To be held on March 18 at 6:00 pm. The Easter Bunny will be there to greet everyone and have his picture taken with you. Be sure to bring your own camera to take the picture. Also, bring your own Easter basket to pick up all the goodies left by the Easter Bunny.

5th ANNUAL SPRING 5K & 1-MILE ROAD RACE

This is the 5th annual race/walk to raise money for the Person County Special Olympics. The race is run on the streets of Roxboro through residential neighborhoods, starting and ending at Huck Sansbury. Also, for those who would rather do a shorter course, there is a 1-Mile Family Fun Run/Walk. The race/walk will go, rain or shine on March 29. Contact the Recreation Department for details or to have an entry form mailed to you.

Early reg. deadline:	March 21	Reg. Fee:	\$15.00 on/before March 21 \$20.00 after March 21
----------------------	----------	-----------	--

HUCK SANSBURY GYM WALKING HOURS

The Huck Sansbury gym is open for walking on a daily basis. The schedule will be posted in the gym or you can call the Recreation office to get the schedule. Schedule will change on a monthly basis.

Mayo Park Programs

YOUTH FISHING DERBY

Prizes for largest, smallest, shortest, longest, and most fish caught

Lunch will be provided

September 15 – 9:00 am

Ages 5 – 12

NC BIG SWEEP

This is an ongoing program beginning September 15 and continuing through October 6 designed to help clean and beautify the shores of Mayo Lake and other areas in Person County. Groups/individuals may sign up at the Mayo Park office and choose to participate at Mayo Lake or other locations in Person County. Call the park at 597-7806 for more information.

MAYO PARK FALL FESTIVAL

October 13

CANOE & KAYAK INTERPRETIVE SELF-GUIDED TOUR

7th ANNUAL RACE IN THE PARK 5K TRAIL RUN

Early reg. deadline: October 5

HORSESHOE TOURNAMENT

FOOD VENDORS

FREE CONCERT

MAYO LAKE CYCLISM BICYCLE TOUR

CANOE/KAYAK RENTALS

EVENING MOVIE

Come to the Mayo Amphitheatre and relax and enjoy a movie in an open air setting. Anyone under 18 years of age must be accompanied by an adult.

Date: September 15

7:30 pm

Admission: Free

INTERPRETIVE HIKES

Interpretive hikes are scheduled on the dates listed below at the park. There is no fee for these events. If you would like to schedule an event for your group, call Mayo Park. Hikes will begin and end at Mayo Park Amphitheatre. All hikes will begin at 9:00 am.

September 22
3March 1

December 1

February 2

November

DAN RIVER CANOE TRIP

Come join us for a leisurely float down the Dan River. The group will depart the Sansbury parking lot at 8:00 am and return at approximately 4:00 pm.

Date:

October 6

Reg. Fee: \$10.00/res

\$15.00/non-res

Reg. Deadline: October 3

SKIING/SNOWBOARDING TRIPS

Trips to Wintergreen Ski Resort

January 22

March 15

OUTREACH PROGRAM

including

INTERPRETIVE HIKES/CANOEING/KAYAKING/SCHOOL VISITS

Upon Request

For more information on these programs and park information, log on to the Mayo Park website at:
<http://mayo.personcounty.net>

Map of Mayo Park



During the month of September there is camping only on weekends

The regular camping season ends Oct 1

The campground will be open for camping the weekend of the Fall Festival – October 12 & 13

The park is open on a year-round basis for day use

The 2008 camping season will begin in May

Cultural Arts Programs

ARTS IN EDUCATION

Person County is dedicated to bringing the arts to every segment of the population. In this vein, coordinating with the Person County Board of Education, we strive to provide a variety of educational and entertaining programs for our school-aged population. This programming will include the following:

Global Warming	September 21	12:30 pm	Kirby Theatre
"A Thousand Words" (Photos from the Vietnam War)	October 1 –November 15	On-going	Kirby Gallery
Jeremy Thompson (Pianist)	March 14, 2008	1:00 pm	Kirby Theatre
Fred Motley (Storytelling)	On-going		Elementary Schools

PRIVATE LESSONS AT THE GALLERY

PIANO

Taught by Bonnie Montague, these lessons are for youth players who will learn the basic techniques one-on-one. Lessons will be held at the Kirby Gallery on Tuesdays and Thursdays from 3:00 – 6:00 pm. To arrange lessons, contact Ms. Montague directly at 599-4850.

VOICE LESSONS

Taught by Anna Reniers, these lessons are tailored to the beginning vocalist or to the advanced students and all in between. Students will need to purchase music as suggested by the instructor. These lessons are scheduled on an individual basis. Contact the Kirby Gallery at 597-1709 to set up these lessons.

GUITAR/BANJO LESSONS

Taught by Michael Thompson, these lessons will teach the basics of either or both instruments to both youth or adults. Lessons will be held at the Kirby Gallery. Contact Mr. Thompson directly at 336-234-9170 to arrange for lessons.

Kirby Theatre Performances

SMOKE ON THE MOUNTAIN HOMECOMING

October 6 - 7:30 pm
Kirby Theatre

The Sanders Family and preacher Oglethorpe (all charter members of the Greatest Generation), return to Mt. Pleasant Baptist Church for the third time just after the Great War in 1946. Join us for the world premier production of their reunion as Dennis is called to be the church's new pastor. Mervyn and June join Denise and her husband in starting the baby boom. *God's in His heaven and all's right with the world..*



SOUTHERN FRIED CHICKS

November 10 – 7:30 pm
Kirby Theatre



Southern Fried Chicks is a story of three women all from the south yet totally different – one's Suburban, one's Urban and one's Plain White Trash. It's where the "New South", "Old South", and "Deep South" come together for an evening of non-stop laughter. Three one-woman shows reveal the soul of the south. It explores three different journeys down the same road. Hear the hilarious take each of these women has on life, love, and the pursuit of happiness.

“A CHRISTMAS CAROL”

November 30, December 1 & 2

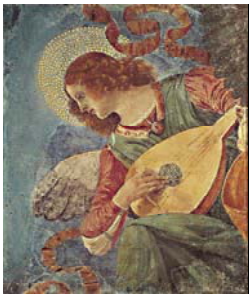
Roxboro Little Theatre
Kirby Theatre

This timeless Christmas classic will warm your heart as the cast, made up of local and regional talent, take you on a journey with the miserly Ebenezer Scrooge as he discovers the true meaning of Christmas. Directed by Connie Mundy, this play will change your Bah-Humbug into a Merry Christmas. Audition times to be announced.



“A CONCERT FOR THE CHRISTMAS SEASON”

December 7 & 8
Roxboro Baptist Church

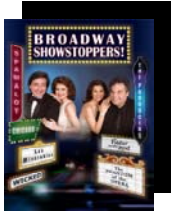


Community Choir of Person County

This annual concert has delighted audiences for many years. This 50 plus voice choir will present beautiful seasonal favorites. This year, conducted by Beth Gillis, the sound of Christmas will permeate the sanctuary of Roxboro Baptist Church. Make plans to attend this fine event.

BROADWAY SHOWSTOPPERS

January 25, 2008
Kirby Theatre



The Producers, Spamalot, Chicago, Phantom of the Opera, Les Miserables, Lion King, and Wicked are among the biggest Broadway shows of all time. Come and hear your favorite Broadway hits in one electrifying blockbuster show. Our performers combined credits include starring roles on Broadway and concerts everywhere from Carnegie Hall to a command performance at the White House.

“A NIGHT OF WINE AND ROSES”

February 14, 15, & 16, 2008

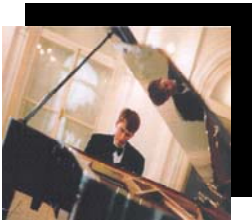
With “Sound Celebration”

Rock of Ages Winery

An evening of wining, dining, and song will prove to be the perfect night to take your valentine or just yourself out on the town. Brought back by popular demand, our featured entertainment will be provided by “Sound Celebration”, a unique foursome blending tight four-part harmonies performing doo-wop, blues, country, contemporary, and novelty selections. Rock of Ages Winery will provide fabulous food and their great selection of wines for you palette.

DR. JEREMY THOMPSON, CONCERT PIANIST

March 14, 2008
Kirby Theatre



Performing Rachmaninoff, Liszt, and others, you will be amazed by the excitement and intensity of this formidable performer. Dr. Thompson is an erudite musician coupled with superb taste and a technique that covers the broadest range in piano literature. He makes direct contact with his audience and more importantly through the direct impact of his playing itself.

STEEL MAGNOLIAS

April 4, 5, & 6, 2008

Kirby Theatre

Set in Truvy’s beauty salon in Chinquapin, LA, where all the ladies who are “anybody” to have their hair done. This play is filled with hilarious repartee and a few acerbic but humorously revealing verbal collisions. The play moves steadily toward tragedy. It is truly touching, funny and marvelously amiable. Our director is no a stranger to the Kirby Stage. In last season’s production of “Driving

Miss Daisy”, Fred Motley both directed and played the part of “Hoke”. We are sure that you will enjoy this production as well.



come

Tickets to performances that are part of the season for the Arts Council may be purchased on line at <http://www.artsinperson.com>

2007/2008 KIRBY GALLERY SHOWINGS

September	Jane Parris Phillips	Mixed Media
October 1 – November 15	A Thousand Words	Photography
November 16 - December 31	Art Guild of Person County	Under \$100 Show
January	Photography Contest	Photography
February	Black History Month	Mixed media
March	To Be Announced	

Kirby Gallery hours are from 1:00 pm to 5:00 pm
Tuesday – Wednesday – Thursday – Friday
Closed Saturday, Sunday & Monday
Phone – 336-597-1709



By: Jane P. Phillips

Youth Athletic Programs

TACKLE FOOTBALL

(Ages 7-9 & 10-12)

Individual Registration:	August 31
Coaches Meeting:	August 27
Season Starts:	October 9
Skills Orientation Day at SMS	September 8
Reg. fee:	\$40.00/res \$60.00/non-res

Playing nights: 7-9 – Thursday
10-12 – Tuesday

SOCCER
(Ages 5 – 14)

Season starts: September 17

BASKETBALL
(Ages 5 – 12)

Individual Registration: October 1 – November 2
Coaches Meeting: November 8
Season Starts: January 3
Skills Orientation Day: November 17
Sills Orientation Make-Up Day: November 19
Reg. fee: \$25.00/res \$37.50/non-res

Playing nights for youth basketball and soccer leagues are as follows:

5-6 (pee wee) and 9-10 (midget) will play on Monday and Thursday nights
7-8 (intermediate) and 11-12 (prep) will play Tuesday and Friday nights
Make-up games will be played on Saturdays and available days during the week

Age cutoff for youth sports - October 16, 2007

Youth Athletic Programs

PRE-SCHOOL BASKETBALL

(Ages 4-5)

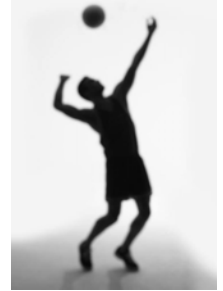
Huck Sansbury Gym

Individual Registration: November 5 – December 14
Program starts: January 12
Reg. fee: \$10.00/res \$15.00/non-res

VOLLEYBALL

(Ages 8-10, 11-13, 14-16)

Individual Registration: January 2 – February 8
Coaches Meeting: February 12
Season Starts: March 15
Skills Orientation Day: February 9
Reg. fee: \$25.00/res \$37.50/non-res



PRE-SCHOOL SOCCER

(Ages 4 – 5)



Individual Registration: February 18 – March 14
Program starts: April 19
Reg. fee: \$10.00/res \$15.00/non-res

HOOP SHOOT

Ages 5 and Up
February 2
Huck Sansbury Gym

Age cutoff for youth sports - October 16, 2007.

Adult Athletic Programs

BASKETBALL

MEN'S OPEN & CHURCH LEAGUES

Team Registration: August 6 – September 14
Coaches Meeting: September 17

Season Starts:

October 15



MEN'S 40 & OVER LEAGUE

Team Registration: August 6 – September 14
Coaches Meeting: September 18
Season Starts: October 15

BASKETBALL RESERVED GROUP PLAY

January – March
\$10.00 per hour
Special hours during the holidays

SPRING WOMEN'S VOLLEYBALL

Team Registration: February 1 – March 4
Coaches Meeting: March 4
Season Starts: March 31



SPRING MEN'S SOFTBALL

Team Registration: March 7 – April 7
Coaches Meeting: April 7
Season Starts: May 5

Tennis Programs

LESSONS

Lessons for beginners and intermediate youth and adults offered in 6-class sessions and are held at the Sansbury tennis courts. Classes are taught by Rick Mallory, USPTA-certified instructor. Contact the Recreation Department for more information.

TENNIS TOURNAMENT

Halloween Doubles Tournament
October 27 – 28

Special Olympic Programs

This is a year-round program that serves athletes in Person County from ages 8 and up with intellectual disabilities. If you would like to volunteer to work with these athletes, contact the Recreation Department at 597-1755.

TRACK & FIELD LOCAL GAMES

Date: April 2
Raindate: April 3
Time: 9:00 am – 2:00 pm
Location: Person High School Track



Special Olympics
North Carolina

BOCCE PRACTICE BEGINS

August 21 – Huck Sansbury

BOCCE QUALIFIER

October 6 - Greensboro

SANTA & ME PHOTOS

November 5 & 8

SONC FALL GAMES

November 9-11 – High Point

BASKETBALL PRACTICE BEGINS

Week of October 17

BASKETBALL SERIES 3-ON-3 TEAMS

January 5 – Winston-Salem

BASKETBALL SERIES 5-ON-5 TEAMS

January 12 – Roxboro

BASKETBALL QUALIFIER

January 19 – UNC Chapel Hill

SONC BASKETBALL TOURNAMENT

March 7-9 – Winston-Salem

ART CONTEST

Month of February

Facilities, Fields, Gyms

FOR INFORMATION, PLEASE CALL THE RECREATION DEPARTMENT AT 597-1755.

HUCK SANSBURY RECREATION COMPLEX The main offices of the Parks and Recreation Department staff are located here in the basement of the gymnasium. (336) 597-1755 for the office and (336) 597-1764 for the gymnasium and concession stand. Located on Morgan Street in Roxboro. .28 mile walking track, gymnasium, one lighted athletic field (combination of baseball/softball and soccer), playground equipment, four lighted tennis courts, picnic shelter.

HUCK SANSBURY ANNEX (OLD SOCIAL SERVICES BUILDING) – Located adjacent to the Huck Sansbury Gym on Morgan Street, the annex contains rooms used for exercise, summer day camp, and various other activities.

ALLENSVILLE PARK Located on Gentry Ridge Road. Two ballfields, one lighted, a picnic shelter, a .25 mile lighted walking track, playground equipment.

BETHEL HILL Located at the Bethel Hill Charter School. One youth baseball/softball field, lighted, playground equipment, gymnasium, paved and lighted walking track.

BUSHY FORK PARK (336) 597-1762. located on Hwy 49 South, two baseball/softball fields, both lighted, a picnic shelter, gymnasium, lighted .25 mile walking track, playground equipment.

EARL BRASHER - Soccer field located at Earl Bradsher school

HELENA (336) 364-8117. Located at the Old Helena Elementary School on Helena-Moriah Road in Timberlake. One baseball/softball field, lighted, paved and lighted .25 mile walking track, gymnasium.

HURDLE MILLS PARK (336) 364-2830. Located on Hurdle Mills Road in Hurdle Mills. One lighted softball/baseball field, a paved and lighted .25 mile walking track, picnic shelter and playground equipment.

KIRBY CIVIC AUDITORIUM (336) 597-1766. Located on Main Street in uptown Roxboro. The total seating capacity of the auditorium is 844.

THE KIRBY GALLERY (336) 597-1709. Located in uptown Roxboro beside the Kirby Civic Auditorium, home of our Cultural Arts Division and the Person County Arts Council. Open to the public from 1:00 pm to 5:00 pm on Tuesday, Wednesday, Thursday, and Friday afternoons.

LONGHURST PARK (336) 597-1767. Located on Park Street in Roxboro. Lighted baseball field, a picnic shelter, a lighted outdoor volleyball court and playground equipment.

MAYO PARK (336) 597-7806. 120-acre site that includes picnic shelters, restroom facilities, hiking and canoe trails, camping areas, RV sites, playground equipment, amphitheatre, etc.

MT. TIRZAH PARK Located on Mt. Harmony Church Road. One lighted baseball/softball field, lighted volleyball court, paved and lighted walking track (.25 miles), a picnic shelter and playground equipment.

OLIVE HILL PARK (336) 597-1768. Located on Hwy 57 North. One lighted softball/baseball field, a paved and lighted .25 mile walking track, horseshoe pits, outdoor volleyball court, a gymnasium, playground equipment, picnic shelter.

PERSON HIGH SCHOOL TENNIS COURTS Located at Person High School, 4 lighted tennis courts, 5 unlighted courts.

SOUTHERN MIDDLE SCHOOL BALLFIELD Located on Southern Middle School Road. One lighted softball field and concession stand.

SOME OF THE ABOVE FACILITIES ARE AVAILABLE FOR RENT BY THE PUBLIC. CALL THE RECREATION DEPARTMENT AT 597-1755 FOR MORE INFORMATION.



Theatre Performance at Kirby Gallery

CONTACT US

RECREATION, ARTS & PARKS DEPARTMENT
425 LONG AVENUE
ROXBORO, NC 27573

PHONE: 336.597.1755
FAX: 336.597.1754
WEBSITE: <http://recreation.personcounty.net>

MAYO PARK
599 NEAL'S STORE ROAD
(physical address)
ROXBORO, NC 27574

PHONE: 336.597.7806
FAX: 336.597.3682
WEBSITE: <http://mayo.personcounty.net>

KIRBY GALLERY
213 NORTH MAIN STREET
ROXBORO, NC 27573

PHONE: 336.597.1709
FAX: 336.597.1732
WEBSITE: <http://www.artsinperson.com>